

STANDARD ASPHALTIC CONCRETE : 1.5" ASPHALTIC CONCRETE WEARING SURFACE, F.D.O.T. TYPE S-I

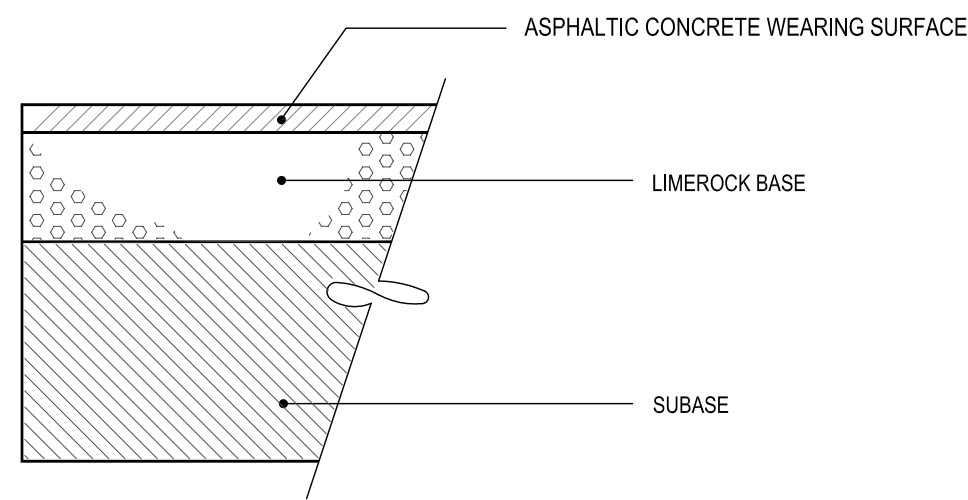
ALL COURSES : INSTALL IN TWO LIFTS IN ALL AREAS
SURFACE COURSE SHALL CONFORM TO THE REQUIREMENTS OF F.D.O.T. STANDARD SPECIFICATIONS SECTIONS 330 & 331

PRIME & TACK COAT : PRIME & TACK COAT FOR THE LIMEROCK BASE COURSE SHALL CONFORM TO THE REQUIREMENTS OF F.D.O.T. STANDARD SPECIFICATIONS SECTION 300.
APPLICATION RATES - PRIME COAT-0.25 GALLONS PER SQ. YD.
TACK COAT-0.08 GALLONS PER SQ. YD.

STANDARD BASE : 8" LIMEROCK BASE COMPACTED TO 98% OF MAXIMUM DENSITY (AASHTO T-180). LIMEROCK BASE TO CONFORM WITH THE REQUIREMENTS OF F.D.O.T. SPECIFICATION SECTIONS 200 & 911.
MINIMUM L.B.R. = 100

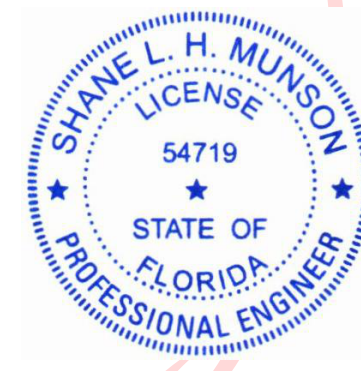
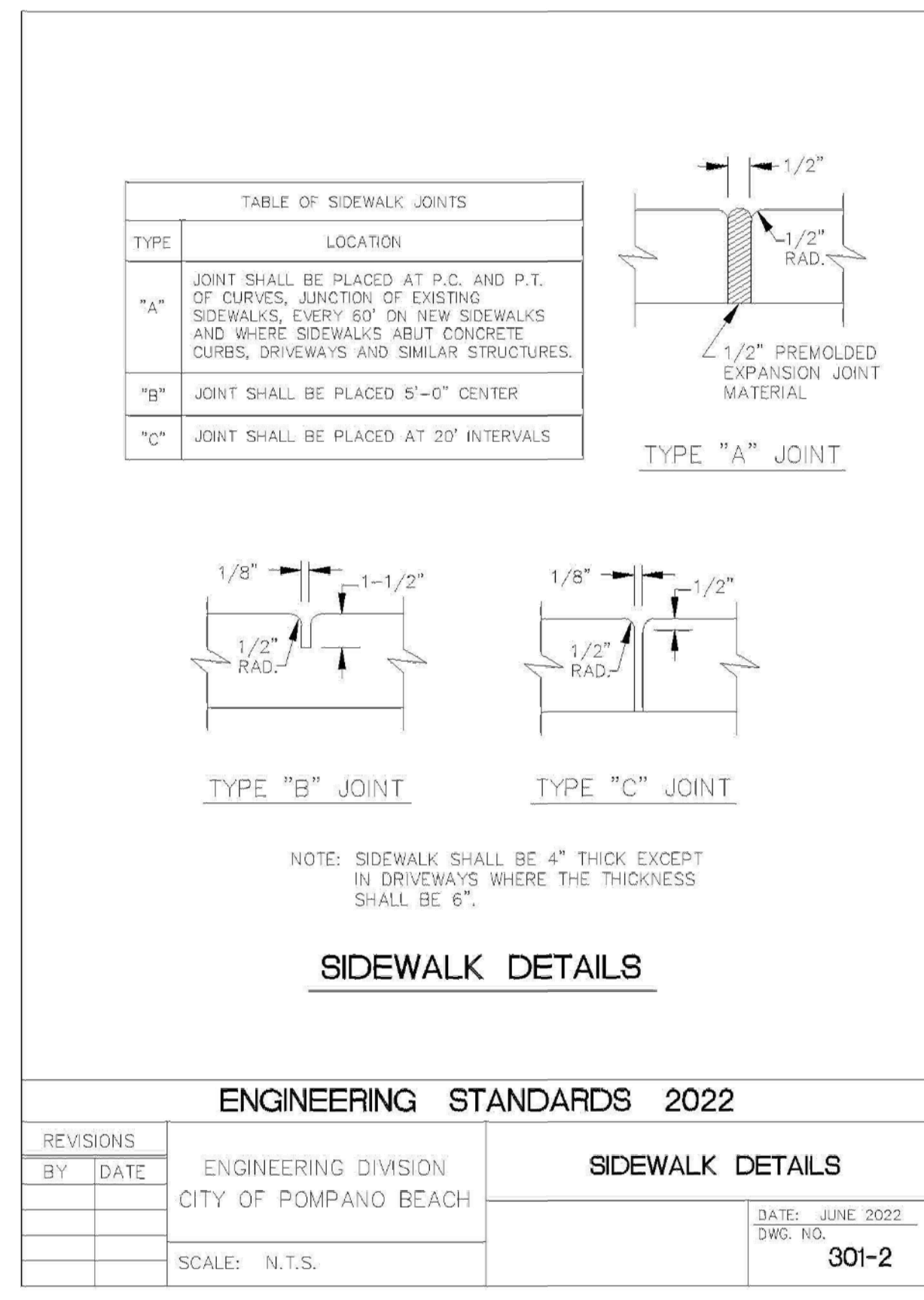
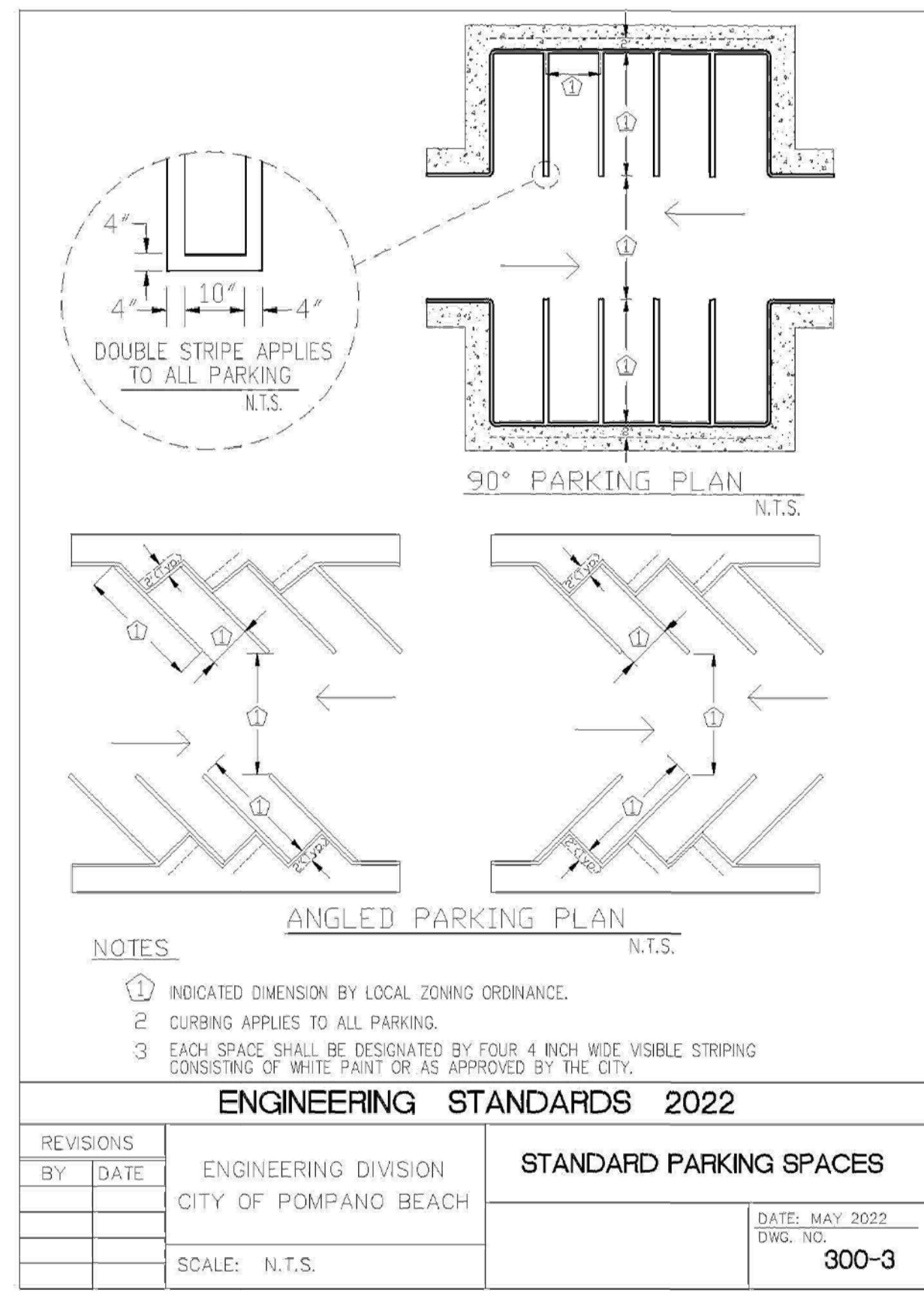
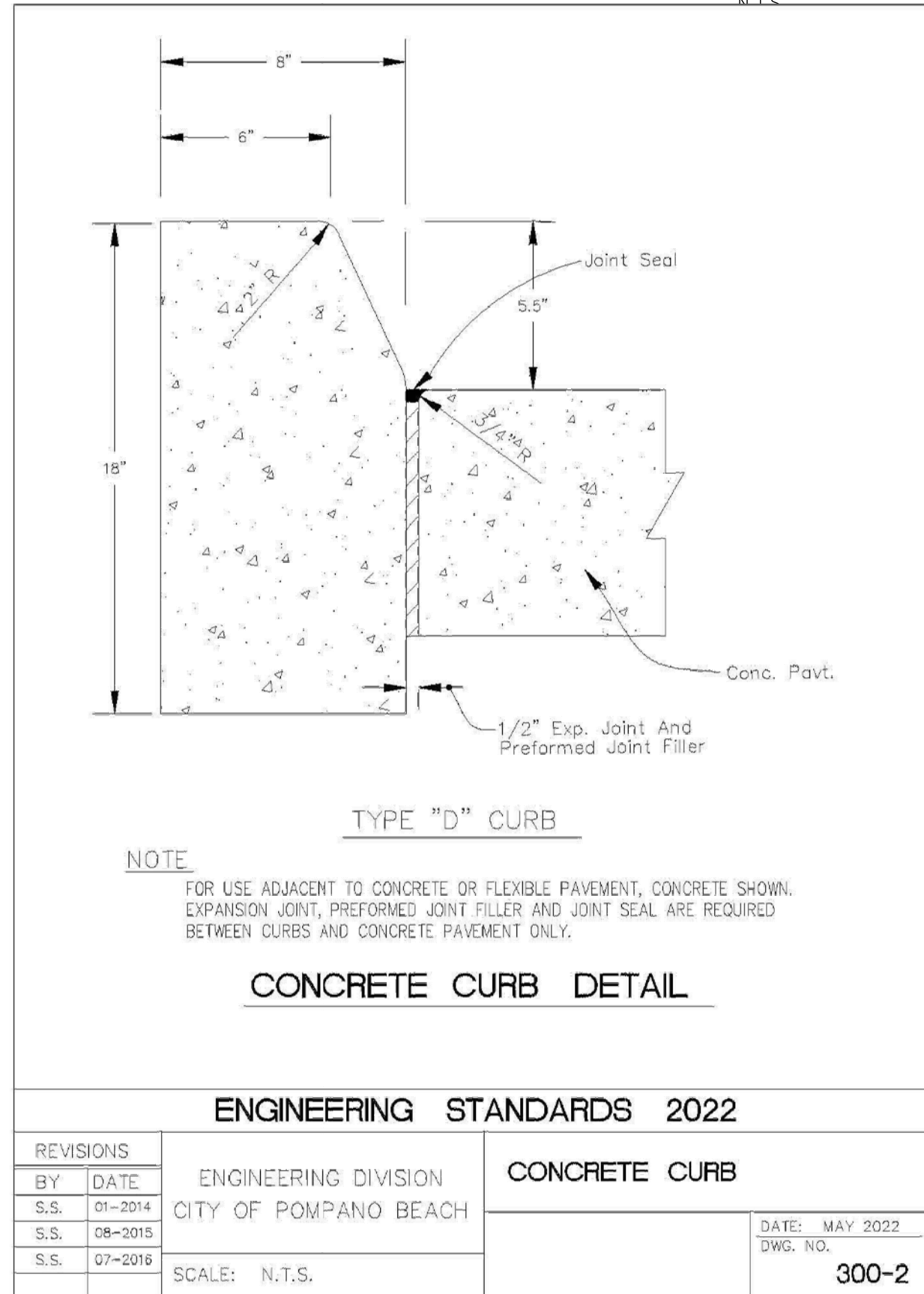
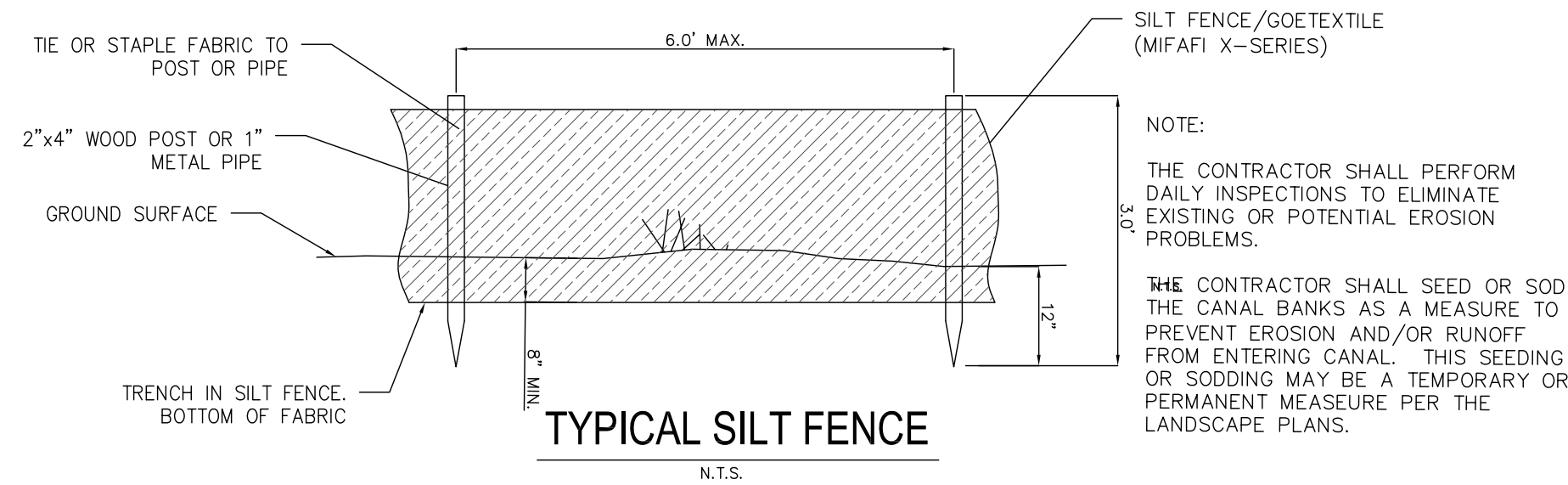
SUBBASE : 12" SUBBASE COMPACTED TO 98% OF MAXIMUM DENSITY (AASHTO T-180). MINIMUM L.B.R.=40

NOTE: GROUND ADJACENT TO PAVEMENT HAVING RUNOFF SHALL BE GRADED TWO INCHES LOWER THAN THE EDGE OF PAVEMENT TO ALLOW FOR THE PLACEMENT OF SOD.



SPACING OF REQUIRED ROADWAY, PARKING AREA AND UTILITY TRENCH TESTS					
	DENSITY		L.B.R.		THICKNESS
	MAX. SPACING	MAX. SPACING	MAX. SPACING	MAX. SPACING	MAX. SPACING
	UN. FEET	SQ. FEET	UN. FEET	SQ. FEET	UN. FEET
COMPACTED OR STABILIZED SUBGRADE	--	--	10	100	100
LIMEROCK BASE	--	--	10	100	100
ASPHALT	--	--	--	--	PER. INSP.
UTILITY TRENCH	--	--	20	--	--

COMPACTION TEST SCHEDULE



DATE: 12/23/2023
THIS ITEM HAS BEEN DIGITALLY SIGNED AND SEALED BY SHANE MUNSON ON THE DATE ADJACENT TO THE SEAL.

PRINTED COPIES OF THIS DOCUMENT ARE NOT CONSIDERED SIGNED AND SEALED AND THE SIGNATURE MUST BE VERIFIED ON ANY ELECTRONIC COPIES.